

# West Virginia Surface Mine Permits

Approximately 390,893 acres of surface mines are currently permitted in WV.

## LEGEND

- Surface Mine Permits
- Rivers
- Counties
- West Virginia

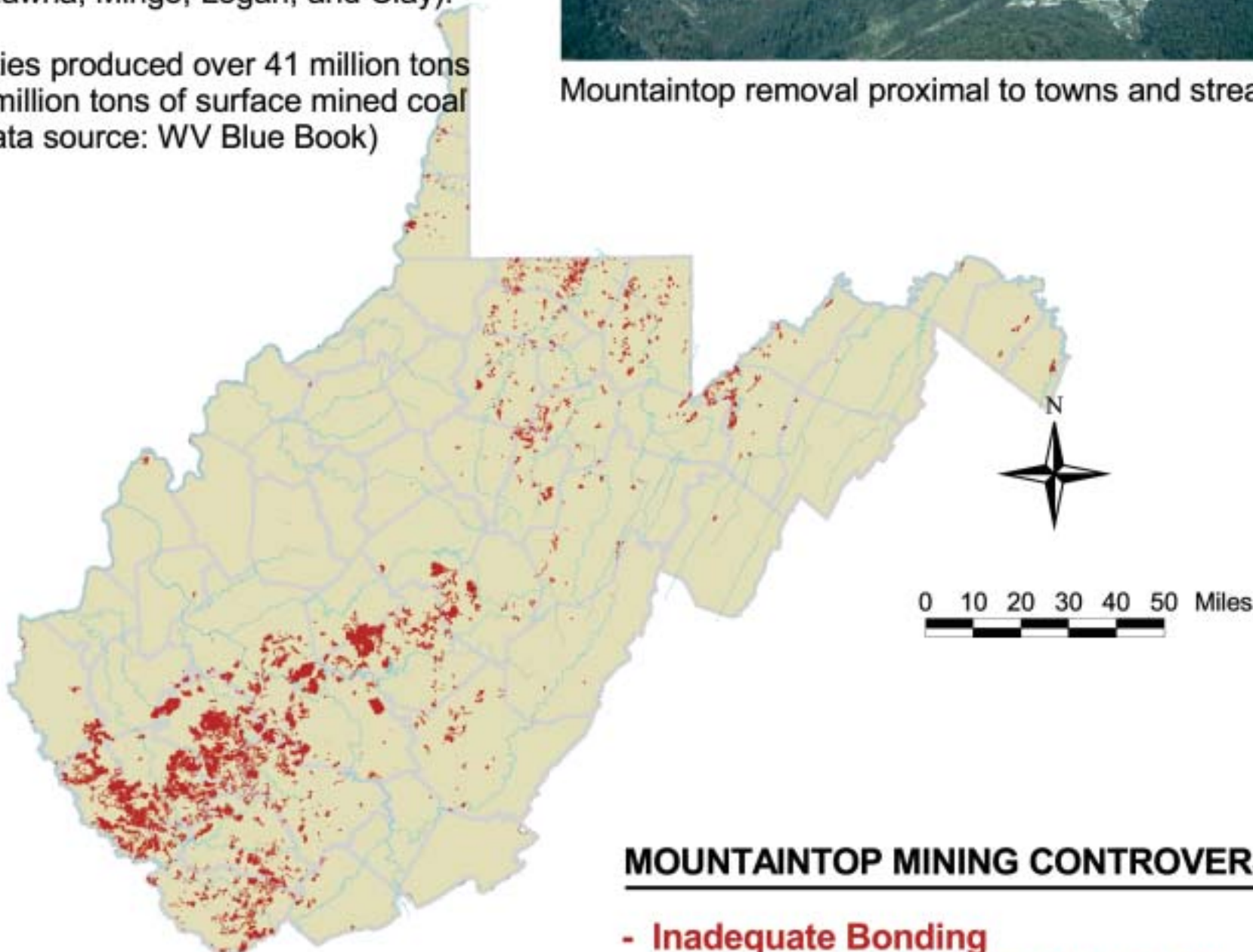
Data Source: WVDEP 2002



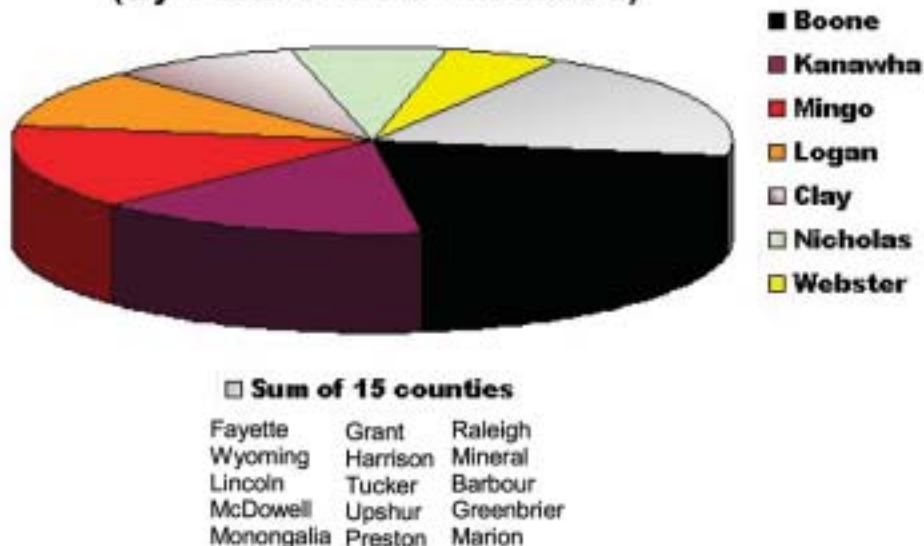
Mountaintop removal proximal to towns and streams.

The vast majority of coal surface mining occurs in 5 of WV's 55 counties (Boone, Kanawha, Mingo, Logan, and Clay).

These counties produced over 41 million tons of WV's 60 million tons of surface mined coal in 2000. (Data source: WV Blue Book)



Surface Mining In WV 2000  
(By Tons of Coal Produced)



## MOUNTAINTOP MINING CONTROVERSIES

- Inadequate Bonding
- Hardwood Ecosystem Destruction
- Blasting Damages to Homes and Wells
- Upper Watershed Groundwater Loss
- Ambient Dust, Silicosis Risk to Workers
- Revegetation, Runoff Control
- Flood Issues
- Valley Fills, Waste Disposal
- Headwater Stream Burial
- Sediment Loading Downstream
- Cumulative Hydrologic Impacts
- Contemporaneous Reclamation
- Lacking Post-Mining Land Uses
- Reduced # of Jobs Per Tons Extracted

Prepared by Robert Nutter Jr. (MU), Josh Beck, and Rick Eades for Ohio Valley Environmental Coalition. Funding provided by the Progressive Technology Project.

We gratefully acknowledge the assistance of WVDEP's TAGIS Group, Michael Shank and Larry Evans and Vivian Stockman

